



Notch

23664 State Hwy. 4
Lake Henry, MN 56362
320-243-7248 • Fax: 320-243-7245
website: notchmfginc.com

NOTCH GRAPPLE HIGH VOLUME BUCKETS

Available Sizes

72", 78", 84", 90", 96", 102", 108", 120", & 132"



Unit pictured has optional forged teeth

Recommended for loaders with operating capacity of 3500 lbs or less

Constructed with high visibility rolled back

Constructed of High Tensile Steel

1-1/4" Pivot Pins with Bushings (greasable)

Cylinder covers protect cylinders and hoses

Twin hydraulic cylinders with casted greasable ends



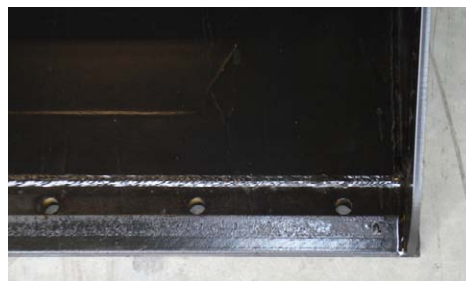
Box 44" High x 48.5" Deep
rolled top design, no sharp corners for safe work environment



Capacities and Measurements are Approximate



Steps for easy access on both sides of bucket



3/4" x 6" Cutting Edge with holes to accept bolt on Cutting Edge



Universal Attachment Standard, other attachments available

Notch Manufacturing reserves the right to change its products or their specifications at any time without notice or obligation.

Notch Manufacturing Inc.

23664 State Hwy. 4 • Lake Henry, MN 56362 • 320-243-7248 • Fax: 320-243-7245 • website: notchmfginc.com