



Notch

23664 State Hwy. 4
Lake Henry, MN 56362
320-243-7248 • Fax: 320-243-7245
website: notchmfginc.com

NOTCH HIGH BACK LOW PROFILE BUCKET



Available Sizes - 60,66,72,78,84,90,96,102

Constructed with high tensile steel

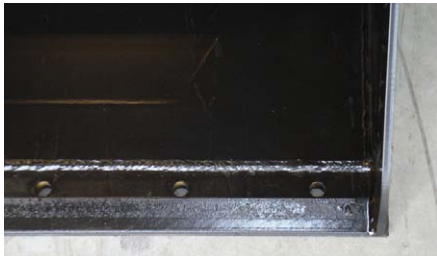
1 1/4" Pivot Pins with Bushings (greasable)

Cylinder covers protect cylinders and hoses

Recommended for loaders with operating capacity of 3000 lbs or less

Constructed with rolled back

Bucket 23-1/2" high x 42" deep



Twin hydraulic cylinders with casted greasable ends

3/4 x 6" cutting edge with holes to accept bottom cutting edge.



Rolled design, no sharp corners for safe work environment.

Universal attachment standard, other attachments available.



Notch Manufacturing reserves the right to change its products or their specifications at any time without notice or obligation.

Notch Manufacturing Inc.

23664 State Hwy. 4 • Lake Henry, MN 56362 • 320-243-7248 • Fax: 320-243-7245 • website: notchmfginc.com