



Notch

23664 State Hwy. 4
Lake Henry, MN 56362
320-243-7248 • Fax: 320-243-7245
website: notchmfginc.com

NOTCH LOW PROFILE DIRT BUCKET GRAPPLES



Available Sizes - 60", 66", 72", 78", 84", 90", 96", 102"

Constructed with high tensile steel

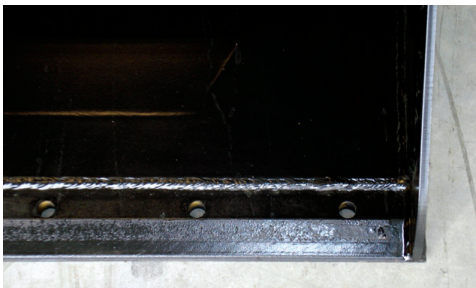
All Pivot Points are greasable

Cylinder covers protect cylinders and hoses

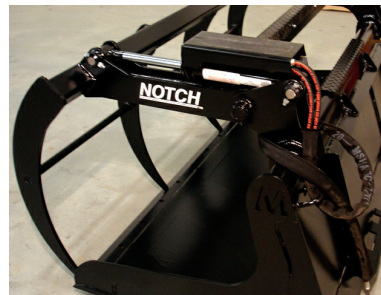
Recommended for loaders with operating capacity of 3000 lbs or less.

Constructed with rolled back

Bucket 21" high x 36" deep

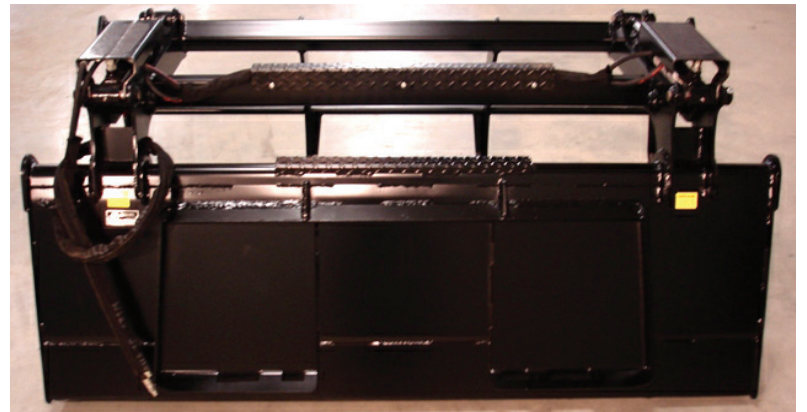


3/4" x 6"
cutting edge
with holes to
accept bottom
cutting edge.



Rolled design, no sharp corners for safe work environment

Universal attachment standard, other attachments available.



Notch Manufacturing reserves the right to change its products or their specifications at any time without notice or obligation.

Notch Manufacturing Inc.

23664 State Hwy. 4 • Lake Henry, MN 56362 • 320-243-7248 • Fax: 320-243-7245 • website: notchmfginc.com