



Notch

23664 State Hwy. 4
Lake Henry, MN 56362
320-243-7248 • Fax: 320-243-7245
website: notchmfginc.com

NOTCH HIGH VOLUME MATERIAL BUCKETS

Available sizes
60", 66", 72", 78", 84", 90" and 102"



Recommended for loaders with operating capacity of
3000 lbs or less

Constructed with high visibility rolled back

Constructed of high tensile steel

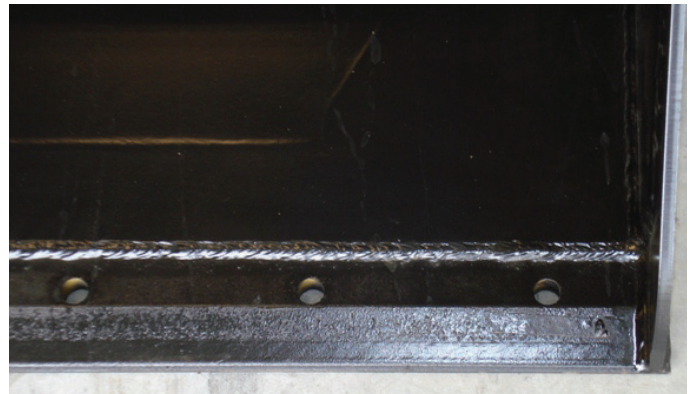
Capacities and measurements are approximate



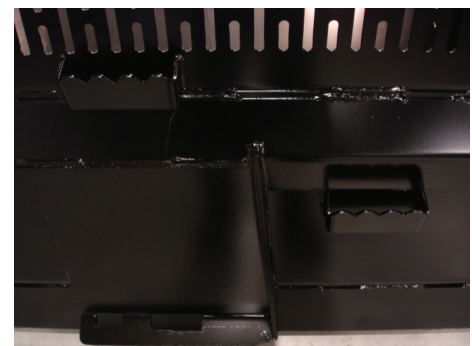
Universal attachment standard,
other attachments available



Box 44" High x 48.5" Deep
rolled to design, no sharp corners for
safe work environment.



3/4" x 6" Cutting edge with holes
to accept bolt on cutting edge



Steps for easy access on both sides of bucket

Notch Manufacturing reserves the right to change its products or their specifications at any time without notice or obligation.

Notch Manufacturing Inc.

23664 State Hwy. 4 • Lake Henry, MN 56362 • 320-243-7248 • Fax: 320-243-7245 • website: notchmfginc.com